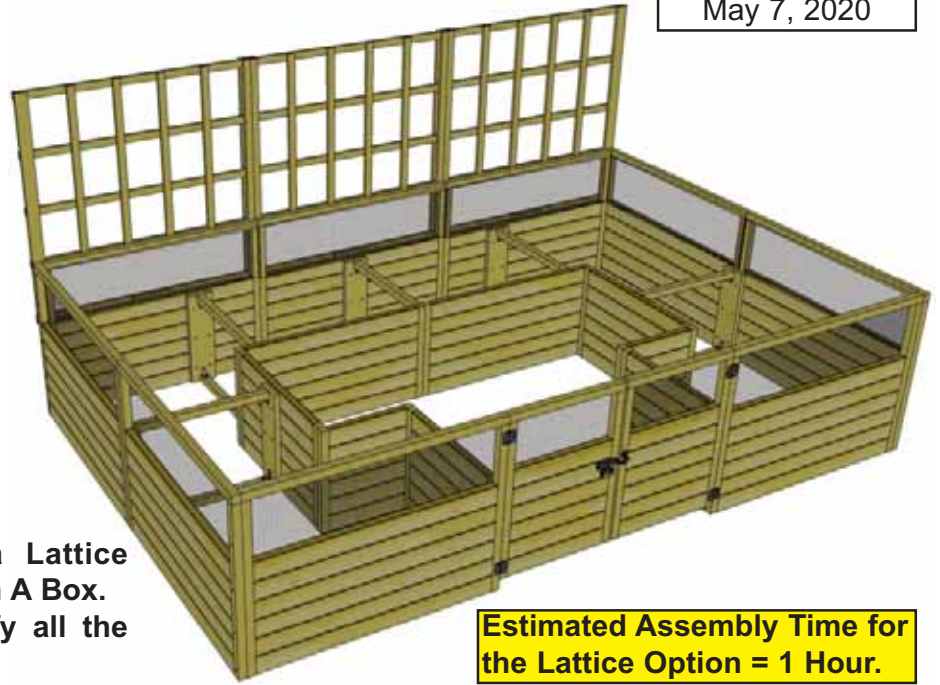




Lattice Option for 12'X8' - 2x4 Model Garden In A Box Assembly Manual

Revision #1.0
May 7, 2020



Thank you for purchasing a Lattice Option for your 12'x8' Garden In A Box. Please take the time to identify all the parts prior to assembly.

Estimated Assembly Time for the Lattice Option = 1 Hour.

Safety Points and Other Considerations

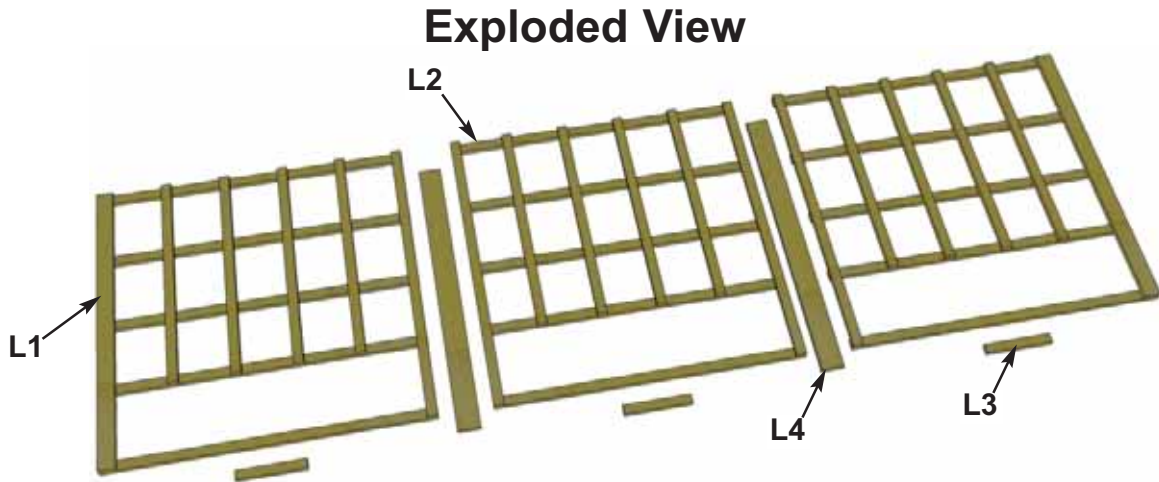
Please follow this instruction manual when assembling your Lattice Option and retain the manual for future maintenance purposes.

Please use Safety Eyewear and Gloves while Assembling. Be sure to read and follow all operating instructions for any tools used during assembly.

Remember - NO SAW CUTTING IS REQUIRED!

In the event of a missing or broken piece, simply call the Outdoor Living Today Customer Support Line @ 1-888-658-1658 within 30 days of the delivery of your purchase. It is our commitment to you to courier replacement parts, free of charge, within 10 business days of this notification. Replacement parts will not be provided free of charge after the 30 day grace period.

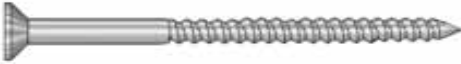


Exploded View & Parts List for Lattice Option



Parts List

- Part L1** 2 - Side Lattice Panels
47 1/2" wide x 47" high
- Part L2** 1 - Center Lattice Panel
46" wide x 47" high
- Part L3** 3 - Horizontal Cleats
3/4" x 1 1/2" x 10"
- Part L4** 2 - Vertical Braces
3/4" x 3 1/2" x 47"

Hardware Kit (Provided)

- S1 - 2 1/2"  x 8 Pcs.
- S3 - 2"  x 32 Pcs.
- BR1 - Square Drive Bit x 1 Pc. 

Tools Required (Not Provided)



Screw Gun/Drill



Tape Measure



1/8" Drill Bit

Safety Equipment Required

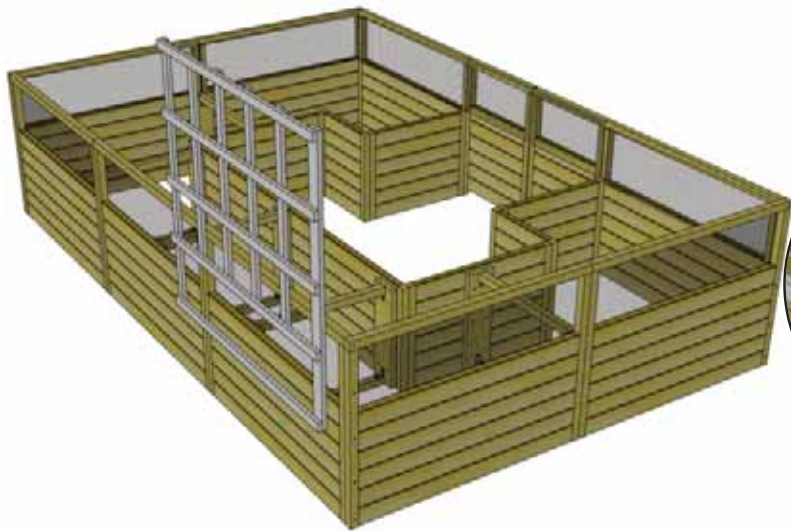
(Not Provided)



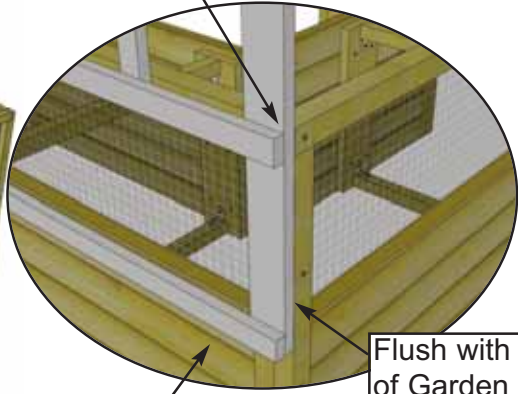
Safety Glasses



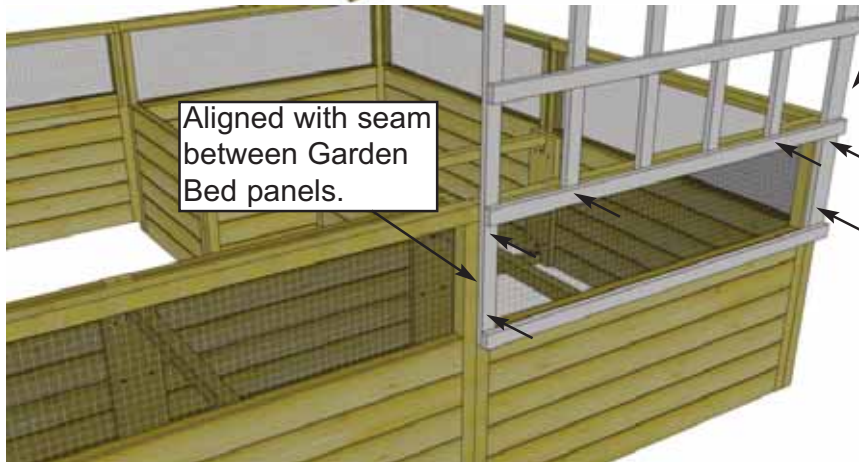
Work Gloves



Top of Lattice rib flush with top of Garden Bed.



Flush with edge of Garden Bed.



Aligned with seam between Garden Bed panels.

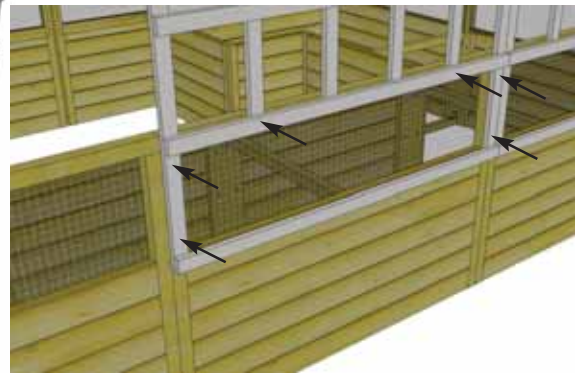
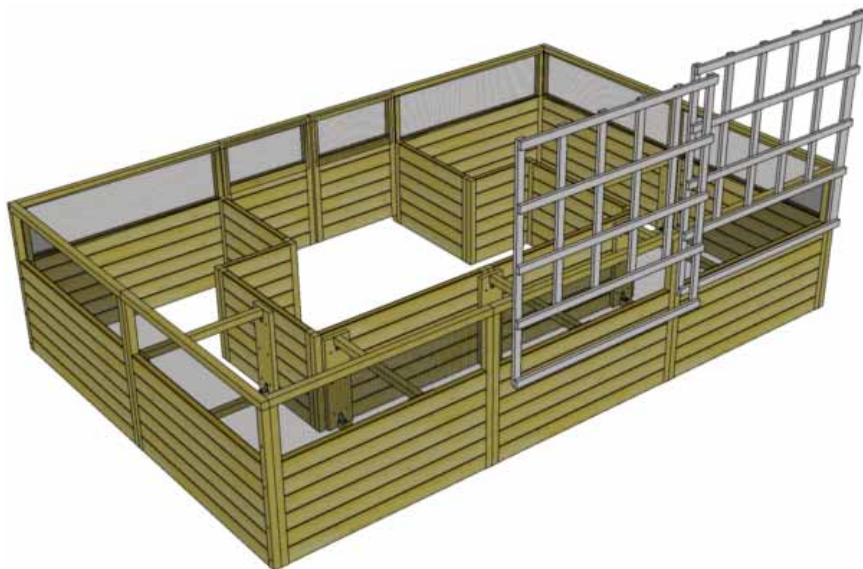
1. Orientate a **Side Lattice Panel** onto a rear side panel of your Garden Bed. The sides of the Lattice Panels will be aligned with the seams between the rear Garden Bed panels. Position vertically as shown and attach with **4 - 2" Screws**.

Parts

L1 - Side Lattice Panel
(47 1/2" x 47") x 1

Hardware

S3 - 2" Screws x 6 total



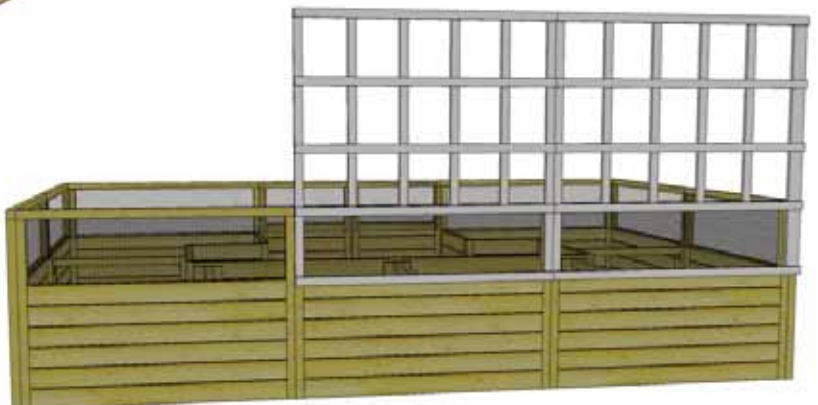
2. Align **Center Lattice Panel** onto the rear middle panel of your Garden Bed as per **Step 1** and attach with **4 - 2" Screws**.

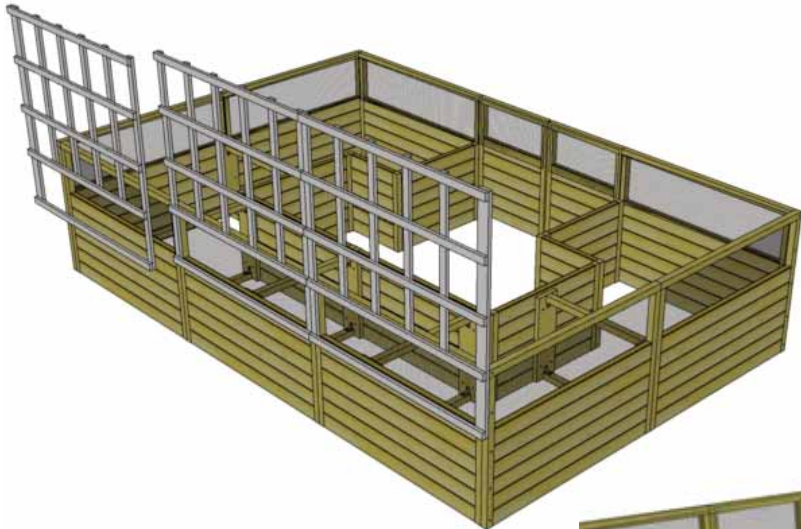
Parts

L2 - Center Lattice Panel
(46" x 47") x 1

Hardware

S3 - 2" Screws
x 6 total

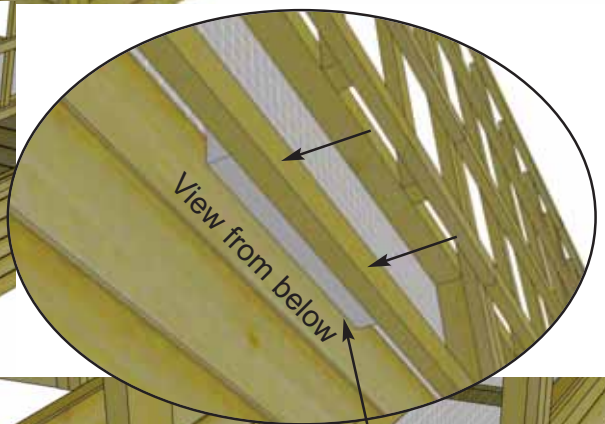
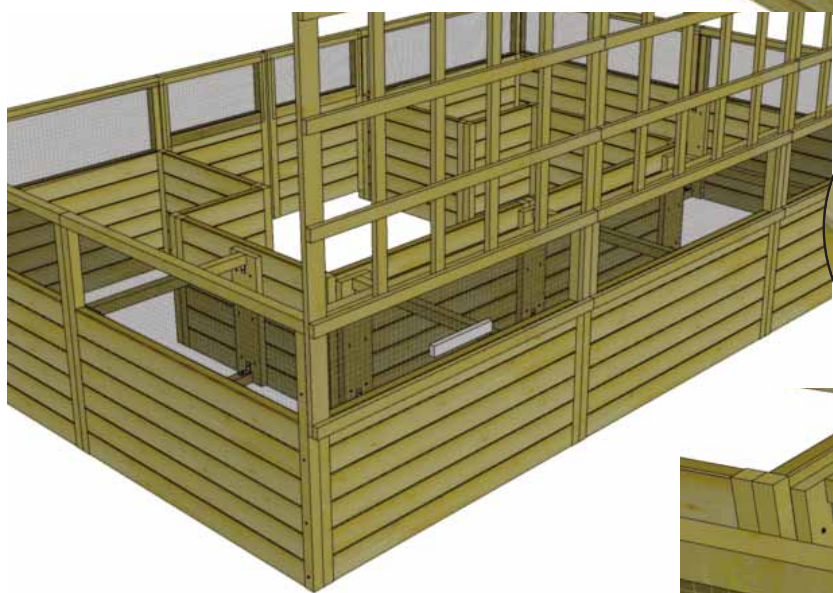
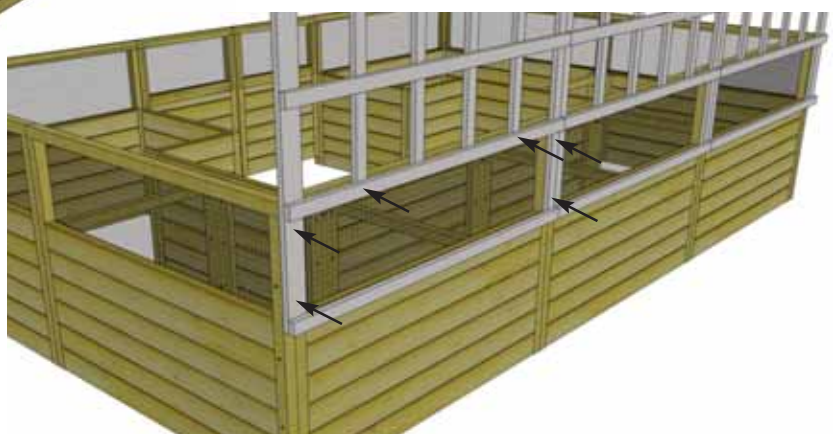




3. Align remaining **Side Lattice Panel** onto the other rear side panel of your Garden Bed as per **Step 1** and attach with **4 - 2" Screws**.

Parts
L1 - Side Lattice Panel
 (47 1/2" x 47") x 1

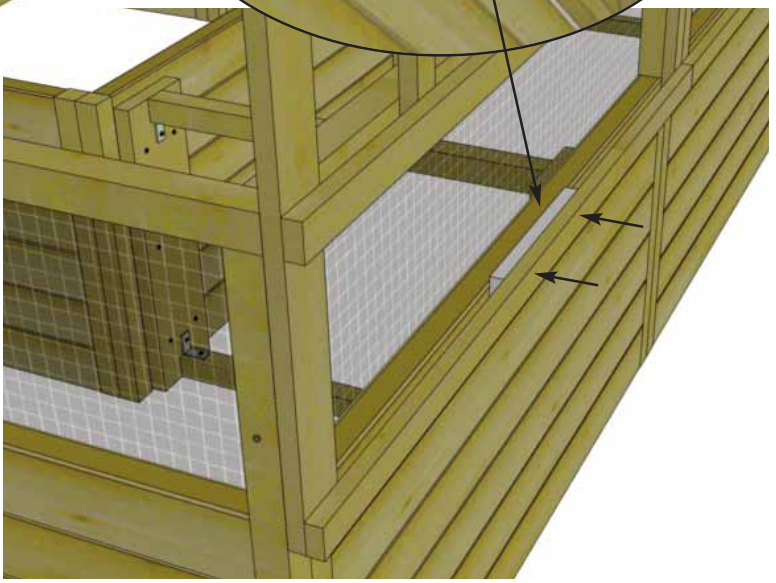
Hardware
S3 - 2" Screws x 6 total



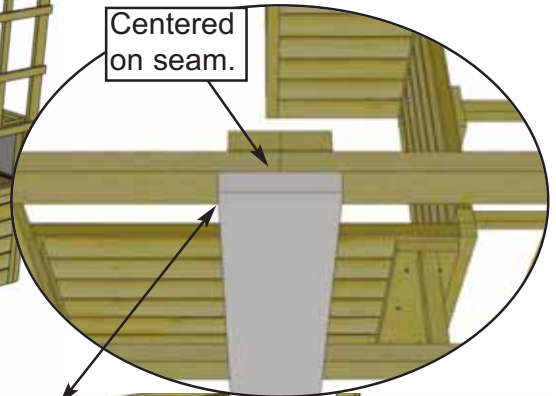
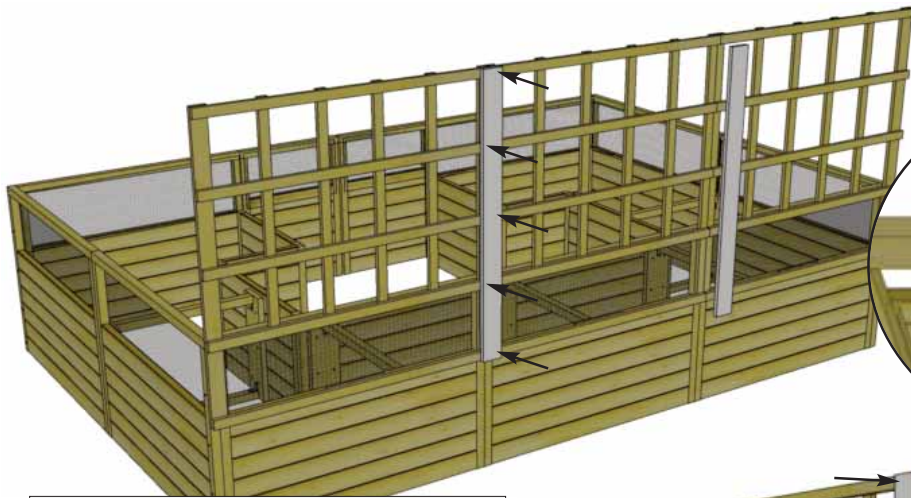
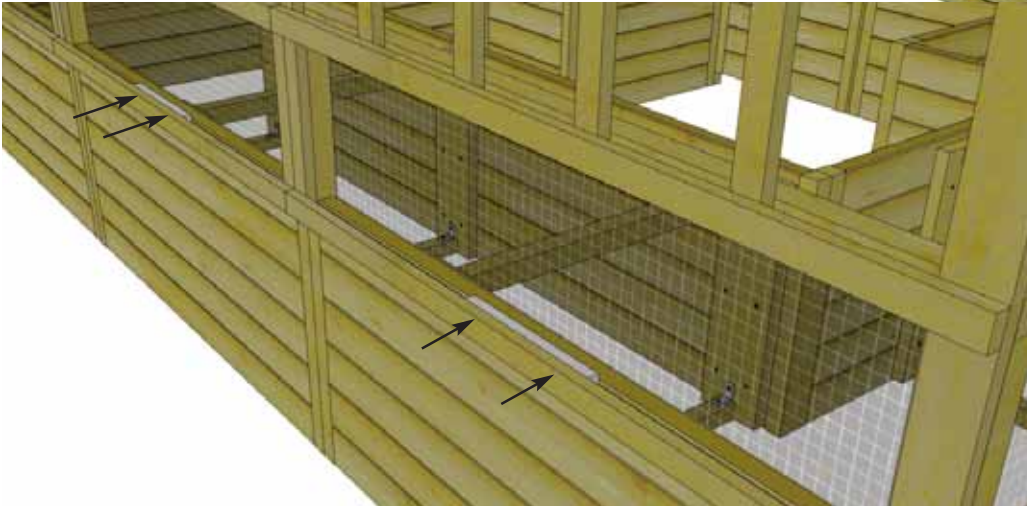
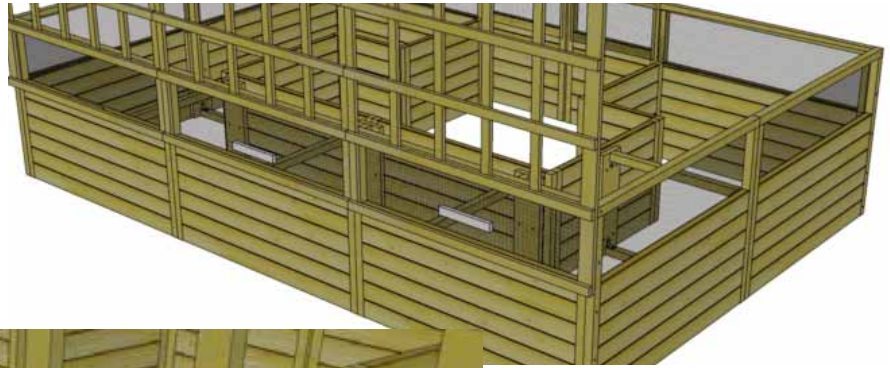
4. Fit a **Horizontal Cleat** between the Lattice Panel and Garden Bed panel, centered just below the screen. Attach with **2 - 2 1/2" Screws**.

Parts (Steps 4 - 5)
L3 - Horizontal Cleats
 (3/4" x 1 1/2" x 10") x 3

Hardware (Steps 4 - 5)
S1 - 2 1/2" Screws x 6 total



5. Position and attach both remaining **Horizontal Cleats** as per **Step 4**.



Centered on seam.

3. Position **Vertical Braces** onto the rear and centered over seams between Trellis Panels. Attach with **5 - 2" Screws** per Brace, ensuring screws go through the intersecting sections of the Lattice crosshatch. Stagger screws side-to-side on Brace so Lattice Panels are secured together.

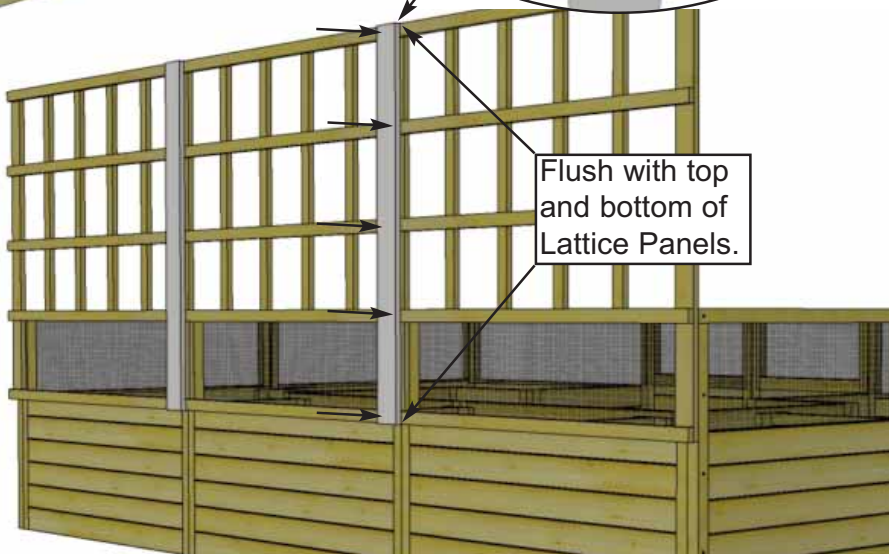
Parts

L4 - Vertical Braces

(3/4" x 3 1/2" x 47") x 2

Hardware

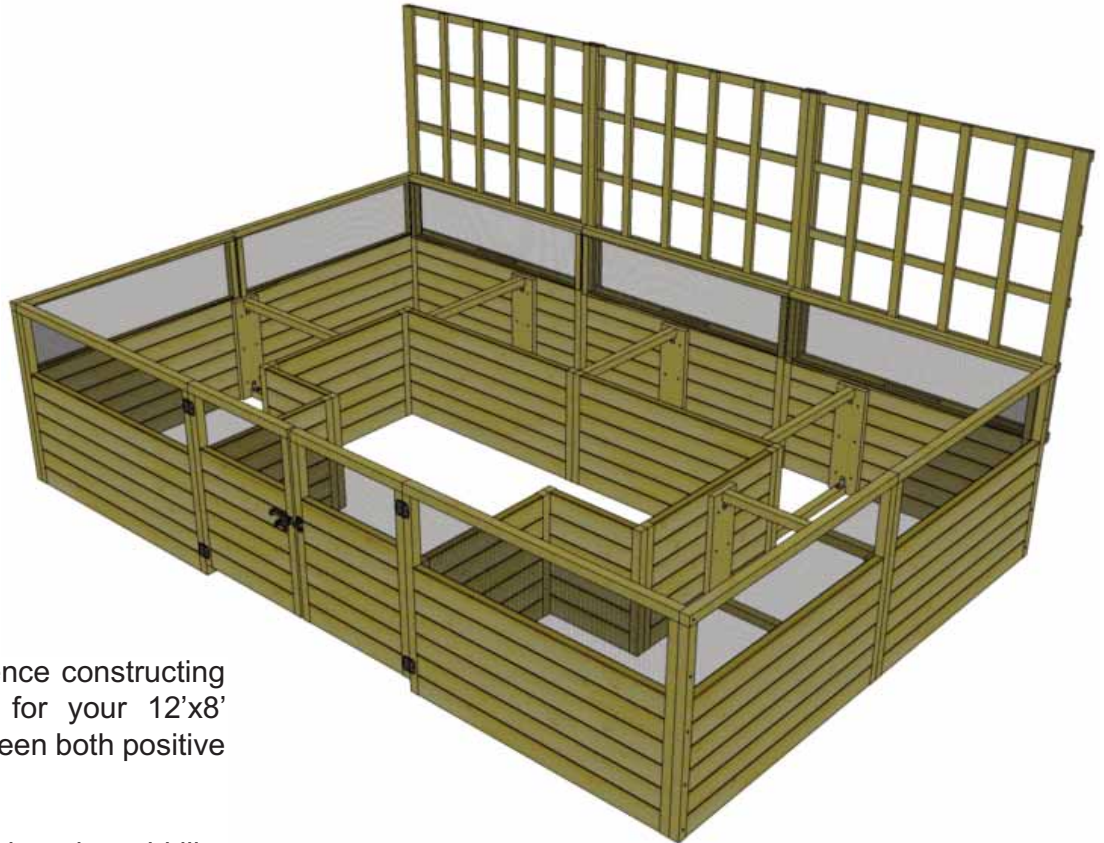
S3 - 2" Screws x 10 total



Flush with top and bottom of Lattice Panels.



Congratulations on Assembling your Lattice Option for your 12'x8' Garden In A Box!



We hope your experience constructing your **Lattice Option** for your 12'x8' Garden In A Box has been both positive and rewarding.

We value your feedback and would like to hear back from you on how well we are doing in the following areas:

- 1. **Customer Service**
- 2. **On Time Shipping**
- 3. **Motor Freight Delivery**
- 4. **Quality of Materials**
- 5. **Assembly Manual**
- 6. **Overall Satisfaction.**



The materials contained in this Assembly Manual may be downloaded or copied provided that ALL copies retain the copyright and any other proprietary notices contained on the materials. No material may be modified, edited or taken out of context such that its use creates a false or misleading statement or impression as to the positions, statements or actions.

Please call, write or email us at:

Outdoor Living Today

Canadian Address
9393 287th Street
Maple Ridge, British Columbia
Canada V2W 1L1

United States Address
P.O. Box 96
Sumas, Washington
USA 98295