

Revision #3
Feb 18th, 2015

Thank you for purchasing a Ramp Option for your Garden Shed. Please take the time to identify all the parts prior to assembly.



PARTS LIST.



Ramp Frame x 3



Wide Ramp Boards x 5



Narrow Ramp Board x 1



Attachment Cleats x 2

INCLUDED HARDWARE

Note: screws shown as actual size.



2 1/2"



1 1/4"

REQUIRED TOOLS (NOT INCLUDED)



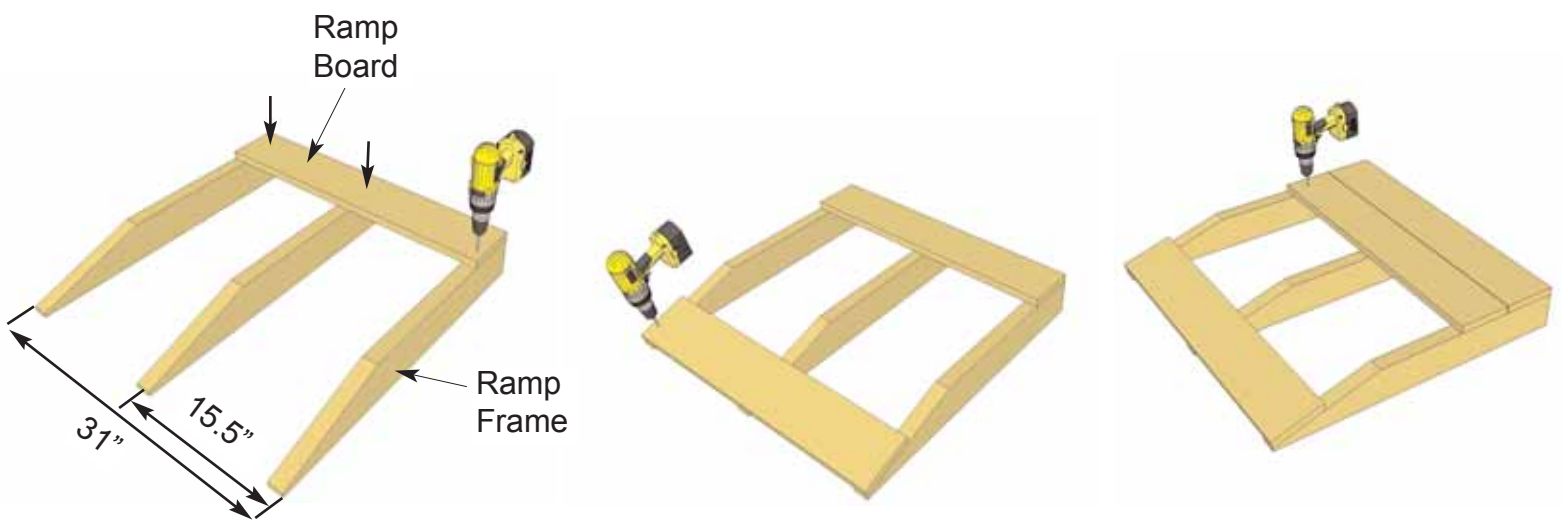
Screw Gun/Drill



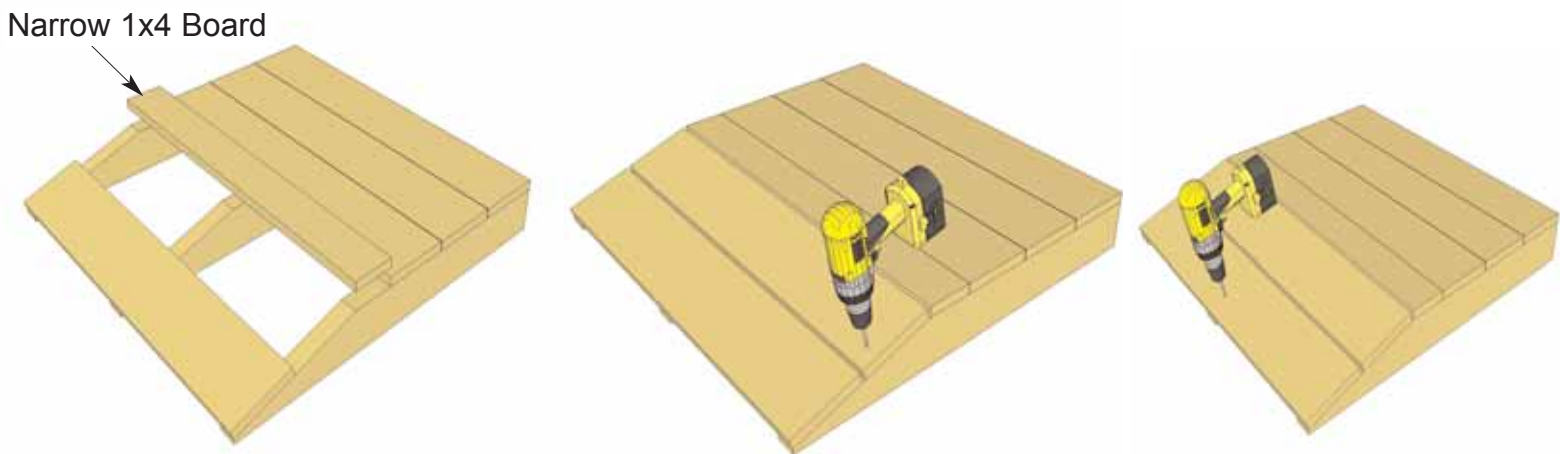
Tape Measure



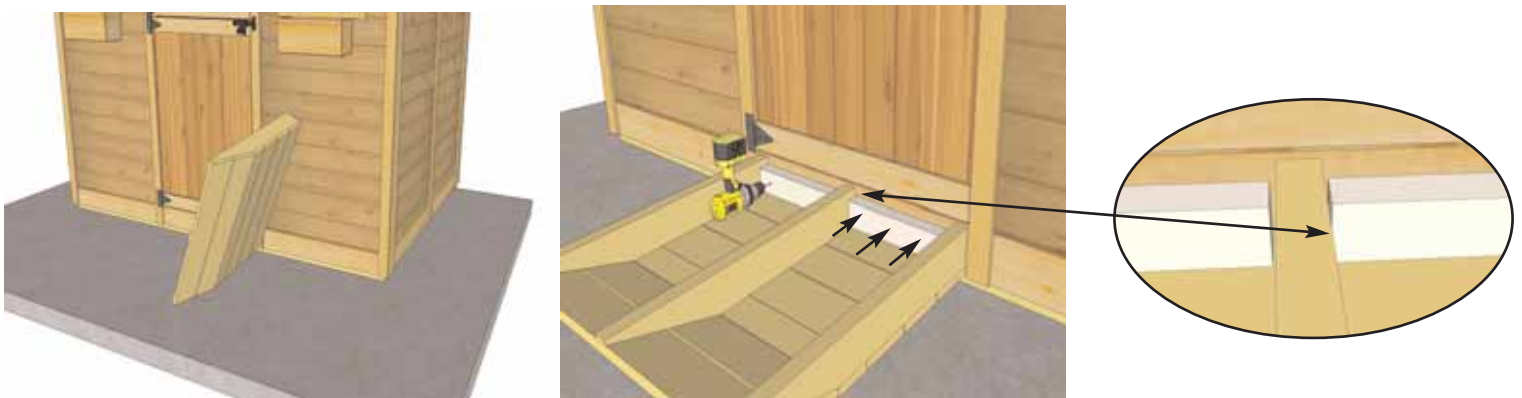
1/8" Drill Bit



1. On level ground, lay out 3 angle cut Ramp Frames spacing outside pieces approximately 31" apart and centering middle frame as illustrated above. Attach Top and Bottom 1 x 6 Ramp Boards to frames using 6 - 1 1/4" screws per board. Pilot hole each board using 1/8" drill bit to prevent end splitting. Prior to screwing, make sure Ramp Boards are even with outsides of frames. Lay down all Ramp Boards to determine the spacing (Shown in Step 2) between each board prior to attaching. Attach boards when correct.



2. Attach 1-1x4 Ramp Board as illustrated above using 6 - 1 1/4" screws. Drill 1/8" pilot holes to prevent wood ends from splitting. Secure remaining Ramp Boards.



3. Flip completed Ramp over and evenly space between doorway. Position both 2x3 x13" Attaching Cleats approximately 3/4" from top of floor. Position each one tight against outside Ramp Frame. Attach each cleat with 3 - 2 1/2" screws.



4. Flip Ramp back over and lift up onto the Attaching Cleats pushing tight against shed.



5. To complete attachment of Ramp, angle screw 2 - 2 1/2" screws from outside Ramp Frame into Attaching Cleat.

We value your feedback and would like to hear back from you on how well we are doing in the following areas:

- 1. Customer Service
- 2. On Time Shipping
- 3. Motor Freight Delivery
- 4. Quality of Materials
- 5. Assembly Manual
- 6. Overall Satisfaction.

Please call, write or email us at:

Canadian Address
 9393 287th Street
 Maple Ridge, British Columbia
 Canada V2W 1L1

United States Address
 P.O. Box 96
 Sumas, Washington
 USA 98295



The materials contained in this Assembly Manual may be downloaded or copied provided that ALL copies retain the copyright and any other proprietary notices contained on the materials. No material may be modified, edited or taken out of context such that its use creates a false or misleading statement or impression as to the positions, statements or actions.